

PRECISION POWER ANALOG PRODUCT REFERENCE GUIDE FOR PRECISION ICs



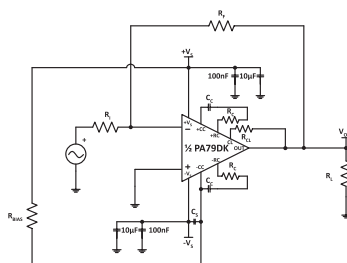
LINEAR AMPLIFIERS

Model	Supply Voltage max (V)	Output Current continuous (PEAK) within SOA (A)	Slew Rate (V/ μ s)	Standby Current max (mA)	Power Dissipation (W)	Package
PA79	350	0.15 (0.2) x2	350	2.5	14 per channel/26 total	20-pin PSOP (dual) (DK)
PA78	350	0.15 (0.2)	350	2.5	14	20-pin PSOP (DK)
PA443	350	0.006 (0.12) x2	32	2.5	12 per channel	24-pin PSOP (dual) (DF)
PA441	350	0.006 (0.12)	32	2.5	12	24-pin PSOP (DF)
PA166	205	1 (4)	35	6	26 per channel	52-pin QFP Power Quad (PQ)
PA165	205	4 (10)	36	6	32	52-pin QFP Power Quad (PQ)
PA164	205	1 (4)	36	6	28	52-pin QFP Power Quad (PQ)
PA162	40	1 (1.5) (x4 channels)	1.4		15 per channel/45	20-pin PSOP (DK)
PA75	40	1.25 (1.5) (x2 channels)	1.4	10	19.5 per channel/28.6	7-pin TO-220 (CD)

High Voltage Dual Power Amplifier with Low Quiescent Current

PA79DK

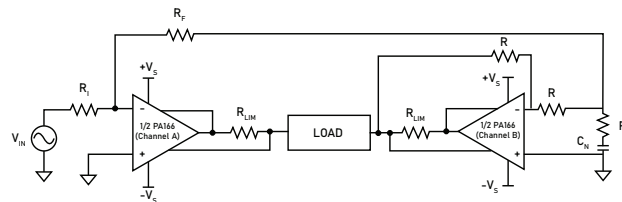
20V to 350V Voltage Supply Operation
150 mA High Output Current (per amplifier)
High Slew Rate - 350V/ μ s



High Density, Multi-Purpose Dual Channel Power Amplifier IC

PA166

205V High Supply Voltage Operation
1A High Continuous Output Current
Configurable as Independent, Bridge, or Parallel



TECHNICAL RESOURCE

LUNCH & LEARN

Invite an Apex Application Engineer to your place for a lunchtime analog technical seminar on a design topic of your choosing! Past topics include:

- Op Amp Basics
- Safe Operating Area
- Single Supply Operation
- Stability and Compensation
- PWM Basics
- Basic PWM Transfer Function
- Biasing PWM Systems
- Low Pass Filter Response
- Piezo Drive Applications
- Deflection
- High Power Techniques
- Motion Control

Visit apexanalog.com or scan the QR code to browse design topics and schedule a lunch and learn, and remember, lunch is on us!



PRECISION POWER ANALOG PRODUCT REFERENCE GUIDE FOR PRECISION ICs

DRIVERS AND SENSORS

Model	Description	Output Supply Voltage Range (V)	Package
AIC1513	8-Channel Parallel HV Driver	30 to 300	32-pin VQFN (ZK)
AIC1508	8-Bit HV Parallel Driver IC	20 to 300	20-pin SOP (ZF)
AIC1532	32-Channel High Voltage Driver	30 to 230	64-pin LQFP (ZD)
AIC1601	Inductive Proximity Sensor IC	5.5 to 38	24-pin QFN (ZC)
AIC1638	Photo Receiver Amplifier IC	5.5	16-pin QFN (ZL)
AIC1605	High Voltage Interface IC	5 to 36	24-pin QFN (ZC)

8-Bit HV Parallel Driver IC

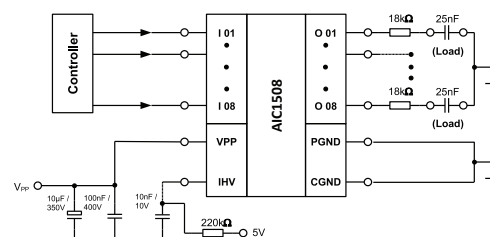
AIC1508

Precision IC

20 – 300 V Supply Voltage (320 V Max)

±40mA Output Current per Channel

Direct Transistor Gate Control Input



32-Channel High Voltage Driver

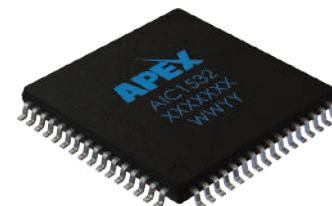
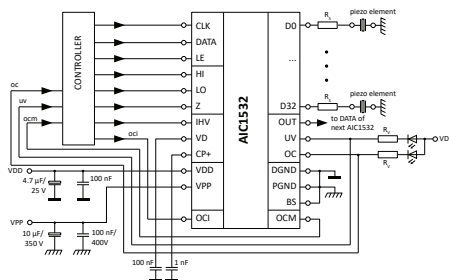
AIC1532

Precision IC

32 High Voltage Push-Pull Output Channels

High Voltage up to 230 V

Over-Current and Short-Circuit Protection



CUSTOM IC DESIGN CAPABILITIES

Apex Microtechnology's Precision IC portfolio includes a diverse range of commercial off-the-shelf devices and full-scale custom IC design services such as; application-specific integrated circuits (ASIC) and application-specific standard parts (ASSPs). Apex supports every stage of development, from initial feasibility assessment and design, to prototype, test, and mass production. Whether you're facing simple or complex analog or mixed-signal IC challenges, Apex stands ready as your trusted partner in delivering analog solutions to meet your demands.

APEX MICROTECHNOLOGY INC.

5980 N Shannon Road
Tucson, Arizona 85741 USA
T: +1.520.690.8600
F: +1.520.888.3329

SALES SUPPORT

Toll Free: +1.800.862.1032
eMail: custserv@apexanalog.com

TECHNICAL SUPPORT

Toll Free: +1.800.546.2739
eMail: Apex.Support@apexanalog.com

STAY UP-TO-DATE ON THE LATEST IN ANALOG NEWS

Here's How to Subscribe Now:

Register now to receive our monthly eNewsletter and expand your knowledge of power analog design -- one topic at a time. To sign up for our monthly eNewsletter scan the QR code below:

www.apexanalog.com

