

4

3

2

1

D

D

C

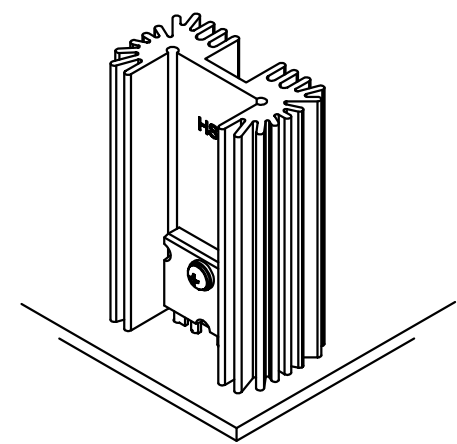
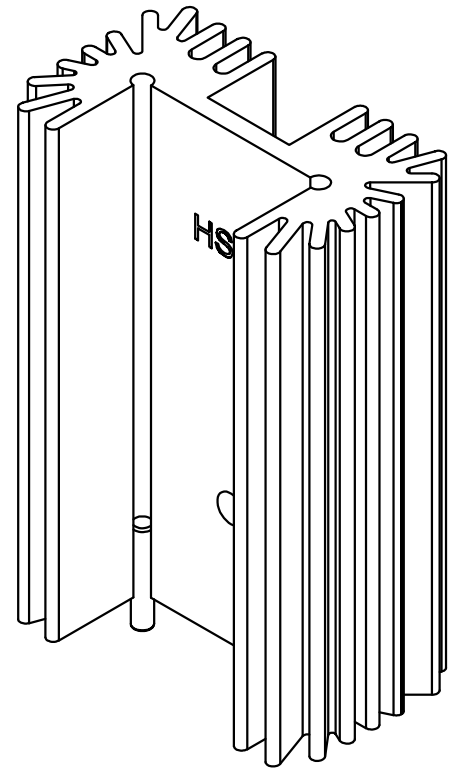
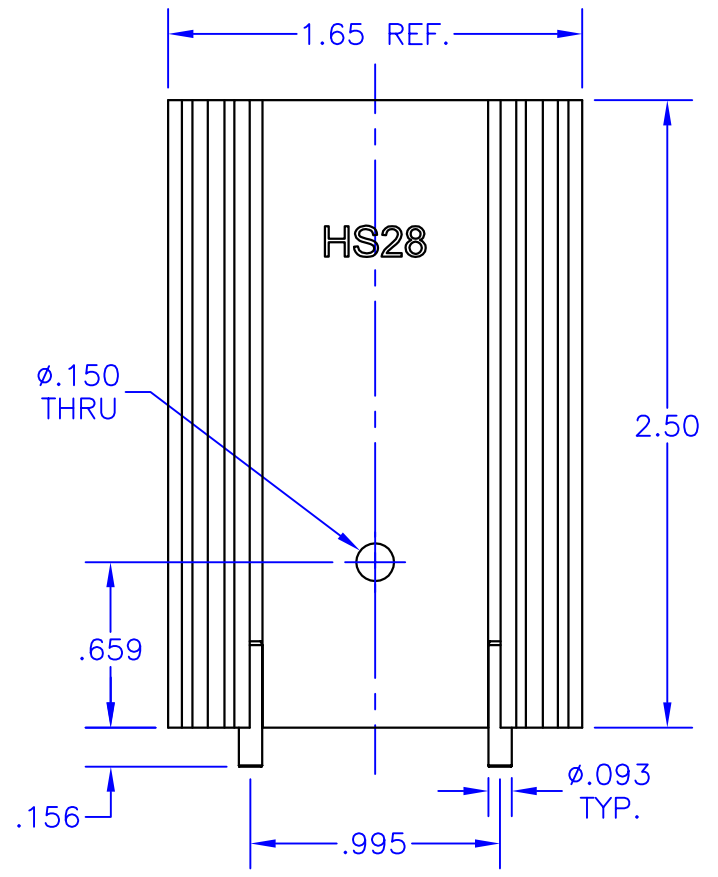
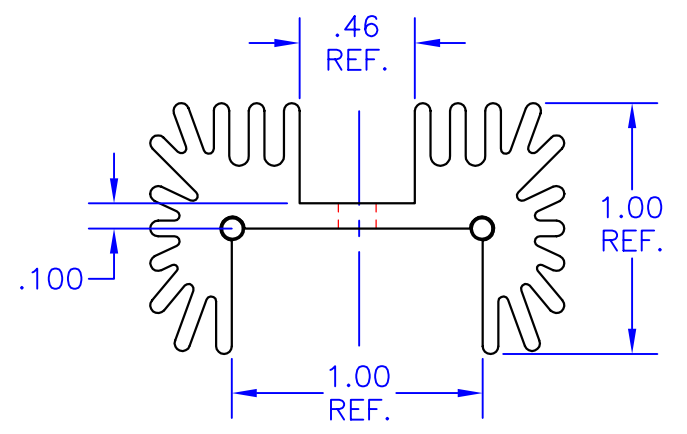
C

B

B

A

A



**Note: Natural Convection based on 70°C temp rise above ambient (and based on 2.5 in. length). Source: <http://www.aavid.com/products/extrusion-heatsinks/63485>

NOTES:

1. Unless otherwise noted, all dimensions are in inches.
2. Break all sharp edges, de-burr & remove loose chips.
3. Material: 6063-T5 aluminum (AAVID Thermalloy extrusion 63485)
4. Finish: Anodize per MIL-A-8625, Type II, Class 2, Black
Typical breakdown voltage > 300V
5. Mark with contrasting ink as shown, if specified by P.O.
6. Approximate Weight: 2.6 oz. [74g]
7. Thermal rating: 6.1°C/W **

TOLERANCES - UNLESS OTHERWISE SPECIFIED
 .XX = ±.01 [.254]
 .XXX = ±.005 [.127]
 ANG. = ±5°



TITLE: HEATSINK
 SUBJECT: MECHANICAL DRAWING
 ENGINEER: AOL
 DRAWN BY: J.FAY
 DCA: 14040
 SH: 1 OF 1

MODEL: HS28
 FILENAME: HS28
 REV: D
 DATE: 24MAR14

4

3

2

1